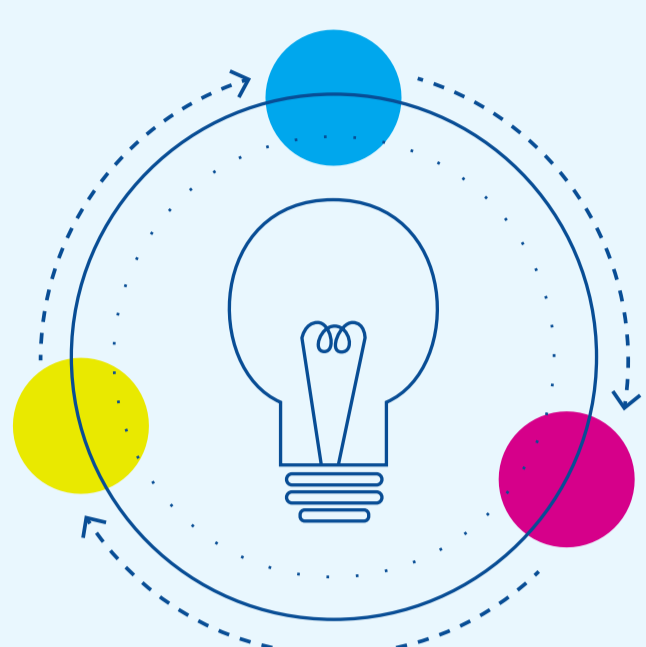


CONSISTENCY, YES. COMPLACENCY? NO WAY.

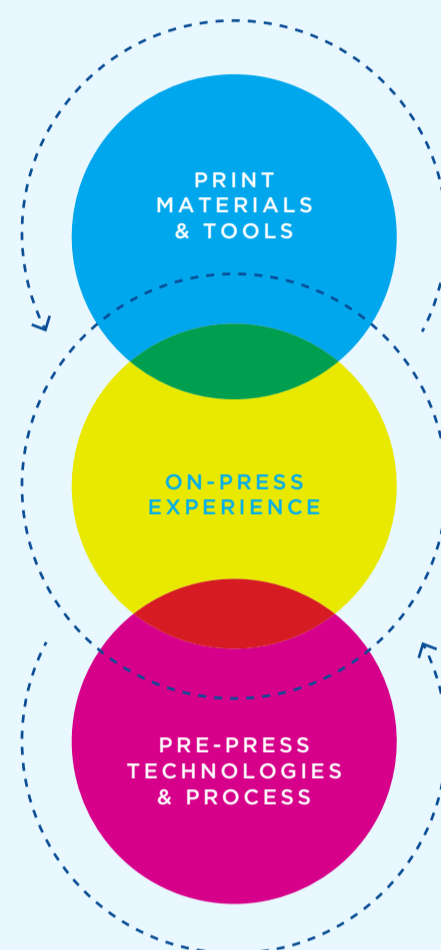
A Higher Standard of Printing for Stronger Brand Equity



IN THE PACKAGING WORLD, if you're not continually innovating, you're already behind. That's why at American Packaging Corporation (APC), we're constantly looking for ways to evolve our systems to improve the form, function and overall value of your packaging solutions.

APC'S PROPRIETARY HOLISTIC PRINTING ECOSYSTEM,

known as HPE Flexo™, has introduced a higher standard of quality in flexography that builds upon the advancements of the HD Flexo industry choice. HPE Flexo™ combines cutting-edge pre-press technologies and processes with on-press expertise and transparency.



THE END RESULT?

Consistent, efficient and repeatable excellence in print output that enhances your brand's impact on both shelf and screen.

BATTLE OF THE PRESSES: HD FLEXO VS. HPE FLEXO™

See how these two printing processes stack up.

PRE-MEDIA	HD FLEXO	APC HPE FLEXO™
Digital Color Management	3rd Party	✓
ColorCert Managed Spot Colors	situational	✓
Certified Managed Proofs	3rd Party	✓
Managed Press/Proofing Profiles	3rd Party	✓
Certified Color Proofs	3rd Party	✓
ECG (Extended Color Gamut) Certified	✓	✓
PLATEMAKING SYSTEMS		
Optimized for Single-Plate Material	✓	✓
Optimized for Multiple-Plate Systems	situational	✓
Optimized for Package Appearance	situational	✓
Crystal Ablation	situational	✓
LED Exposure	situational	✓
Advanced Surface Screening	situational	✓
Advanced Dot Screening	situational	✓
PLATE MOUNTING SYSTEM		
Automated Precision Plate Mounting	situational	✓
ON PRESS		
Robotic Setups	situational	✓
Automatic Washups	situational	✓
ColorCert Print Quality System	situational	✓
Defect Detection	situational	✓
Remote Press Check Enabled	situational	✓
FTA FIRST Certified Press Operators	situational	✓
POST-PRESS		
Digital Repeatability	situational	✓
3rd-Party Compatability QA Data	situational	✓

READY TO CREATE SOMETHING AMAZING?

We can't wait to put the power of HPE Flexo™ to work for your brand.